



*planning together for secondary schools south of the 401*

# Accommodation Review Committee Meeting #5

November 9, 2016

# Agenda

1. Welcome
2. ARC Report
3. Preliminary Final Staff Report
4. Group Dialogue
5. Preparation for Final Public Meeting (*November 23, 2016*)
6. Sharing of Correspondence
7. Next Steps

# ARC Report

With respect to the Initial Staff Report, the ARC supports the staff recommendations to:

- Close Gordon Graydon Memorial S.S.
- Relocate the Enhanced Learning Program from Glenforest S.S. to Lorne Park S.S. and The Woodlands S.S.
- Relocate the International Business and Technology (IBT) Program from Gordon Graydon Memorial S.S. to T.L. Kennedy S.S.
- Relocate the Vocational and Autism Spectrum Disorder (ASD) programs from Gordon Graydon Memorial S.S. to Glenforest S.S.



# ARC Report

## The ARC also put forth the following alternate options:

1. The Graphic and Design Management (GDM) Program be relocated from Gordon Graydon Memorial S.S. to T.L. Kennedy S.S.
2. Effective September 2017:
  - a) Grade 9 students in Enhanced Learning Program (ELP) at Glenforest S.S. be directed to Lorne Park S.S. and The Woodlands S.S
  - b) Grade 10, 11 or 12 students currently enrolled in the ELP program at Glenforest S.S. be given the option to attend Lorne Park S.S. or The Woodlands S.S
3. Closure of Gordon Graydon Memorial S.S. and relocation of the Vocational, ASD, GDM and IBT programs be effective *September 2018*.



# Final Staff Report (FSR)

- Staff support all of the alternate options put forth by the ARC
- FSR contains all of the alternate options put forth by the ARC
- FSR will reference the need to include other considerations put forth by the ARC through the PAR process in the transition/implementation plans



# Final Staff Report

## Recommendations in Final Staff Report Unchanged from Initial Staff Report and Supported by ARC

- 1) Close Gordon Graydon Memorial S.S.
- 2) Relocate the ELP from Glenforest S.S. to Lorne Park S.S. and The Woodlands S.S.
- 3) Relocate the IBT Program from Gordon Graydon Memorial S.S. to T.L. Kennedy S.S.
- 4) Relocate the Vocational and ASD programs from Gordon Graydon Memorial S.S. to Glenforest S.S.

# Final Staff Report

## Recommendation # 1

### Amended Following Input from the ARC and Supported by Staff in FSR

<u>Original</u> Recommendation in the Initial Staff Report	<u>Amended</u> Recommendation in the Final Staff Report
<p><b>Effective September <u>2018</u></b>, the ELP at Glenforest S.S. be closed and students directed to existing Enhanced programs at The Woodlands S.S. and Lorne Park S.S.</p>	<p><b>Effective September <u>2017</u></b>, the ELP at Glenforest S.S. will be <u>phased out</u>, beginning with Grade 9. Students will be directed to attend The Woodlands S.S. or Lorne Park S.S., depending on their address.</p> <p>Students in Grades 10 - 12 currently in the ELP at Glenforest S.S. will be <u>given the option to remain</u> at Glenforest S.S. or attend The Woodlands S.S. or Lorne Park S.S., depending on their address.</p>

# Final Staff Report

## Recommendation # 2

### Amended Following Input from the ARC and Supported by Staff in FSR

Original Recommendation in the  
Initial Staff Report

**Effective September 2019**, the Vocational and ASD  
Programs be relocated from Gordon Graydon  
Memorial S.S. to Glenforest S.S.

Amended Recommendation in the  
Final Staff Report

**Effective September 2018**, the Vocational and ASD  
Programs be relocated from Gordon Graydon  
Memorial S.S. to Glenforest S.S.



# Final Staff Report

## Recommendation # 3

### Amended Following Input from the ARC and Supported by Staff in FSR

Original Recommendation in the  
Initial Staff Report

**Effective September 2019**, the GDM Program be relocated  
from Gordon Graydon Memorial S.S. to Glenforest S.S.

Amended Recommendation in the  
Final Staff Report

**Effective September 2018**, the GDM Program be relocated  
from Gordon Graydon Memorial S.S. to T.L. Kennedy S.S.

# Final Staff Report

## Recommendation # 4

### Amended Following Input from the ARC and Supported by Staff in FSR

Original Recommendation in the  
Initial Staff Report

**Effective September 2019**, the IBT Program be relocated  
from Gordon Graydon Memorial S.S. to T.L. Kennedy S.S.

Amended Recommendation in the  
Final Staff Report

**Effective September 2018**, the IBT Program be relocated  
from Gordon Graydon Memorial S.S. to T.L. Kennedy S.S.

# Final Staff Report

Present Location	Program	Recommended New Location(s)	Date of Implementation
Glenforest S.S.	Enhanced	The Woodlands S.S.	<b>Phasing in beginning September 2017</b>
		Lorne Park S.S.	
Gordon Graydon Memorial S.S.	Vocational	Glenforest S.S.	<b>September 2018</b>
Gordon Graydon Memorial S.S.	Autism Spectrum Disorder	Glenforest S.S.	<b>September 2018</b>
Gordon Graydon Memorial S.S.	Graphic and Design Management	<b>T.L. Kennedy S.S</b>	<b>September 2018</b>
Gordon Graydon Memorial S.S.	International Business and Technology	T.L. Kennedy S.S.	<b>September 2018</b>

# Final Staff Report

*The FSR references that in the development of the transition and implementation plans, consideration be given to the following:*

- Architect consultation with Principals at Glenforest S.S. and T.L. Kennedy S.S. regarding capital improvements to best support teaching and learning
- Innovative Vocational programming at Glenforest S.S. supported by appropriate capital improvements
- Capital improvements to Glenforest S.S. to best support the ASD program
- Appropriate resources and staffing at Glenforest S.S. and Gordon Graydon Memorial S.S., including the addition of staff, if necessary, to ensure the continued viability of program offerings during the 2017-18 transition year

# Group Dialogue





# Preparation for the Final Public Meeting

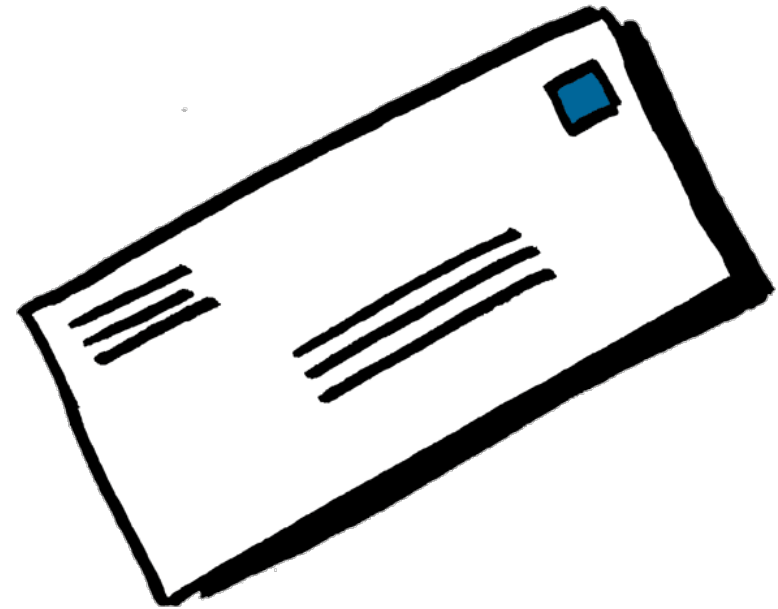
November 23, 2016

Port Credit S.S. (Cafeteria)

7:00 pm

*...strategies to ensure that voices are heard: creating opportunities that encourage an open and informed exchange of views*

# Sharing of Correspondence



# Next Steps

**November 23, 2016**

*Final Public Meeting*

**December 12, 2016**

*Final Staff Report submitted to the Regular Meeting of the Board of Trustees*

**January 10, 2017**

*Public Delegations*

**January 24, 2017**

*Final Staff Report presented to the Board of Trustees for Approval*

*Note: Timelines in January may be subject to change*